

Spider  Farmer

USER MANUAL

SF-GREENGLOW

Everything your vegetables need



SF-GreenGlow-01

WHY CHOOSE



Shipping:

- A. Global Delivery Available: We deliver worldwide
- B. Multiple Warehouses: with warehouses in the USA, CA, AU, UK, EU, RU, and TH, we can offer fast delivery within 24 hours



Customer Service :

- A. Local Repair Centers: We have repair centers in the USA, CA, AU, UK, EU, and RU for your convenience
- B. 5-Year Warranty
- C. Dedicated Customer Service: our friendly and professional customer service department is always ready to assist you



Support:

Professional Technical Support: We have a team of experts available to assist you with any technical issues



Bulk Price Discounts

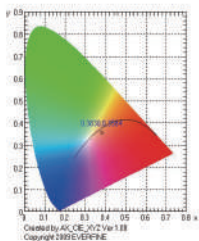
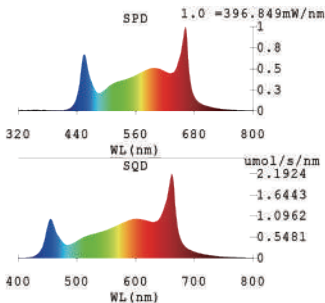
Discounts for Large Orders: The more you order, the cheaper the price



MANUAL INDEX

SPECIFICATIONS	01
PACKAGE CONTENTS	01
INSTALLATION	02-03
APPLICATIONS	04
OTHER CATEGORIES	05
SAFETY INSTRUCTIONS FOR USE	06
WARRANTY	06
GENERAL CARE	07

SPECIFICATIONS



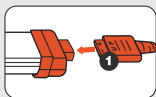
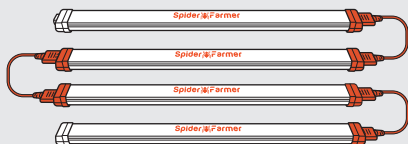
Model	SF-GreenGlow
Spectrum	Spectrum:650-660nm;3000K-3500K;5000K-5500K
Diode Brand	OSRAM
Diode Amount	200*4= 800PCS
Input	100W±5%@AC120-277V
Amp	0.7897A@AC120V 0.3998A@AC240V 0.3517A@AC277V
Frequency	50/60HZ
Single Strip Size	23.8*1.75*1.18IN/60.5*4.45*3CM
Net Weight	5.1lb/2.3KG
Package Weight	6.4lb/2.9KG
Lifespan	50,000Hours
Warranty	5 Year Limited Warranty

PACKAGE CONTENTS

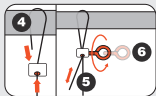
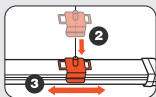
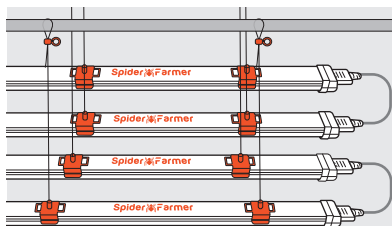
Light fixtures(4) 	Large Clips(2) 	Small Clips(8) 	Length Adjusters(8) 	
Bolts (8) 	Connecting cables(3) 	AC Power Cord(1) 	Dimming box(1) 	Power hook(1) 

INSTALLATION

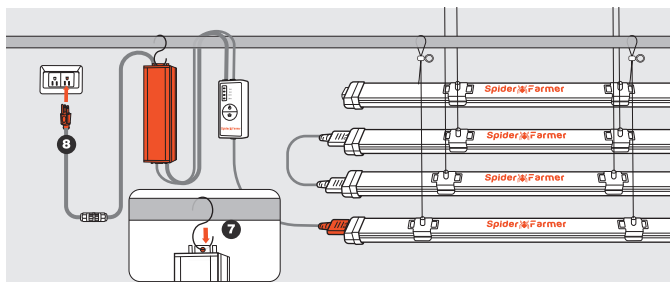
A. USE 4 STRIPS.



1. Use 3 cables to connect 4 light strips in series, paying attention to the "UP" indication on the connecting lines.



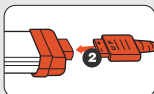
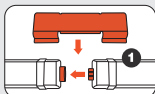
2. Attach all clips to the light strips.
3. Adjust the position of the clips as needed.
4. Wrap the steel wire rope around the planting stand or tent pole.
5. Pass the steel wire rope through the center of the circular fitting.
6. Adjust to the appropriate height, then tighten the screw.



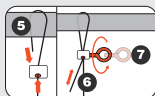
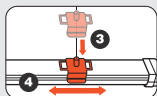
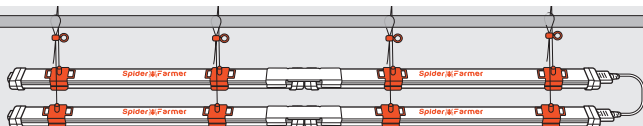
7. Suspend the power source on the planting stand using hooks.
8. Ensure all assembly is complete, finally power it on.

INSTALLATION

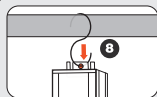
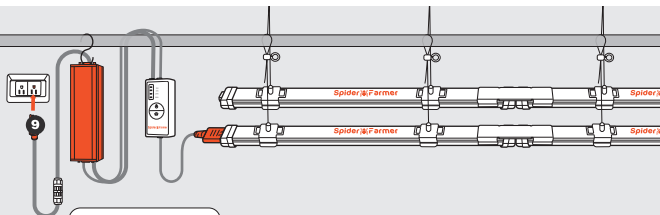
B. FROM 4 STRIPS TO 2 STRIPS



1. Insert the two strips into each other, and secure them with large clips. 4 short strips become 2 long strips.
2. Use 1 cable to connect 2 long strips in series, paying attention to the "UP" indication on the connecting lines.



3. Attach all clips to the light strips.
4. Adjust the position of the clips as needed.
5. Wrap the steel wire rope around the planting stand or tent pole.
6. Pass the steel wire rope through the center of the circular fitting.
7. Adjust to the appropriate height, then tighten the screw.



8. Suspend the power source on the planting stand using hooks.
9. Ensure all assembly is complete, finally power it on.

The Spider Farmer GreenGlow is the perfect partner for the Spider Farmer Plant Stand.

WARNING

Do not use 1, 2, or 3 strips individually. Use all 4 strips together. Connecting cable: Attention to the "up"

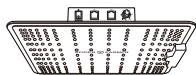
Ensure safe usage of the product by adhering to the instructions provided above. Disregard of these guidelines could result in product malfunction or user safety hazards.



OTHER CATEGORIES

Led Grow Lights

Spider Farmer Led Grow Lights utilize Samsung LM301 B high-efficiency diodes to provide powerful and uniform light output for optimal crown penetration and the highest possible yield. Each light comes equipped with a dimming box, allowing for adjustable light intensity and the ability to connect multiple lights for uniform light distribution.



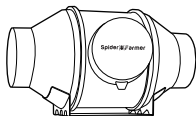
Grow Tents

Spider Farmer grow tents are designed to create ideal growing conditions for indoor plant cultivation. By adopting a unique 1680D Oxford canvas and Diamond reflective Mylar, Spider Farmer grow tents effectively maximize light reflectivity and prevent light leaks. The metal frame is made from hardened steel, and our tents are three times thicker and denser than ordinary tents. With a stable metal angle adapter and a load capacity of up to 140 lbs.



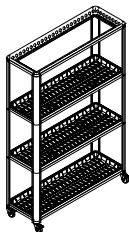
Inline Fan

Utilizing a mixed flow design combined with an EC motor to ensure true energy efficiency with a very low noise level. Lightweight ABS blades reduce the airflow resistance and increase airflow by 40%. The smart controller has multiple modes for operation, 10 speeds, is easy to program and can control the humidity and temperature automatically.



Plant Stand

This stand is made of high-grade iron with a moisture-resistant powder coating, ensuring its durability. The weight and durability make it a testament to exceptional quality. Textured and leak-proof trays provide a secure and hygienic environment for your plants. Installation takes under 20 minutes, and the stand has four removable wheels for effortless movement. We recommend using it with SF-GreenGlow or SF600 LED Grow Light.



SAFETY INSTRUCTIONS FOR USE

1. The light belongs to class I protection equipment; it must be properly grounded.
2. The power supply should be connected by qualified professionals.
3. Before use, ensure that the voltage used is not higher or lower than the specified value in the operation manual.
4. For daisy chain operations, the total power cannot exceed your timers rated capacity.
5. Do not touch the product while it is in operation.
6. Do not look directly into the lights without wearing protective glasses.
7. To disconnect the power cord, only pull on the plug; do not use excessive force on the cable itself.
8. Exercise caution and adhere to electrical safety guidelines during installation. Avoid touching exposed wires to prevent the risk of fatal electric shock.
9. Unplug the power cable during storms and rainy weather to mitigate the risk of lightning strikes.
10. Always unplug the light before cleaning and performing repairs.
11. Do not disassemble, repair or modify the light without the authorization of the manufacturer unless performed by qualified professionals.
12. The maximum operating temperature is 40°C. Do not operate the light above this temperature.
13. Do not connect the light to other dimming devices without authorization.

WARRANTY

Spider Farmer offers the following warranty services, currently available only in the United States:

1. Returns or exchanges can be initiated within 30 days of delivery with proof of purchase. Grow tents must be returned in their original condition. Spider Farmer will cover the shipping costs for returns or replacements.
2. For defects arising within the first 2 years, Spider Farmer offers a complimentary after-sales service. If a returned product or part is found to be ineligible for service, the customer's credit card or PayPal account will be charged the authorized amount.
3. LED lights purchased between 2 and 5 years ago are eligible for free accessories or trade-in allowances.

GENERAL CARE

SPIDER FARMER Grow Lights are passively cooled with zero moving components. They are designed for harsh environments and years of maintenance-free performance. Some basic care will keep your lights working at peak performance cycle-after-cycle.

- Natural convection dissipates heat away from the heat sink. In order to facilitate proper cooling, maintain at least a one-inch gap between the fixture and the roof of your grow area. Failure to do so may reduce the fixture's lifespan.
- To achieve the optimal lifespan and performance of your fixtures, routinely check for and remove excess dust, debris, and mineral build up from the heat sink and LED array. Cleaning should always be done with the fixture unplugged and we recommend using low-pressure compressed air to clean effectively and safely.
- Never use a cloth to clean the diode array, as it may scratch or damage the integrity of the silicon seal, or even dislodge diodes entirely.
- To minimize degradation, avoid touching the diodes with your hands, even while the fixture is powered off.

YOUR RELIABLE INDOOR GROW PARTNER

Our Social Media



Contact:

Tel: +18409776768

Email: support@spider-farmer.com
info@spider-farmer.com